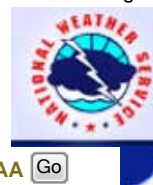


National Oceanic and Atmospheric Administration's

# National Weather Service



[Site Map](#)

[News](#)

[Organization](#)

Search

NWS

All NOAA

Local forecast by "City, St"

City, St

[XML](#) [RSS Feeds](#)

### Warnings

[Current](#)  
[By State/County...](#)  
[UV Alerts](#)

### Observations

[Radar](#)  
[Satellite](#)  
[Snow Cover](#)  
[Surface Weather...](#)  
[Observed Precip](#)

### Forecasts

[Local](#)  
[Graphical](#)  
[Aviation](#)  
[Marine](#)  
[Hurricanes](#)  
[Severe Weather](#)  
[Fire Weather](#)

### Text Messages

[By State](#)  
[By Message Type](#)  
[National](#)

### Forecast Models

[Numerical Models](#)  
[Statistical Models...](#)  
[MOS Prod](#)  
[GFS-LAMP Prod](#)

### Climate

[Past Weather](#)  
[Predictions](#)

### Weather Safety

[Weather Radio](#)  
[Hazard Assmt...](#)  
[StormReady /](#)  
[TsunamiReady](#)  
[Skywarn™](#)

### Education/Outreach

### Information Center

[Tsunamis](#)  
[Publications...](#)

### Contact Us

[FAQ](#)  
[Comments...](#)



NWS on Facebook

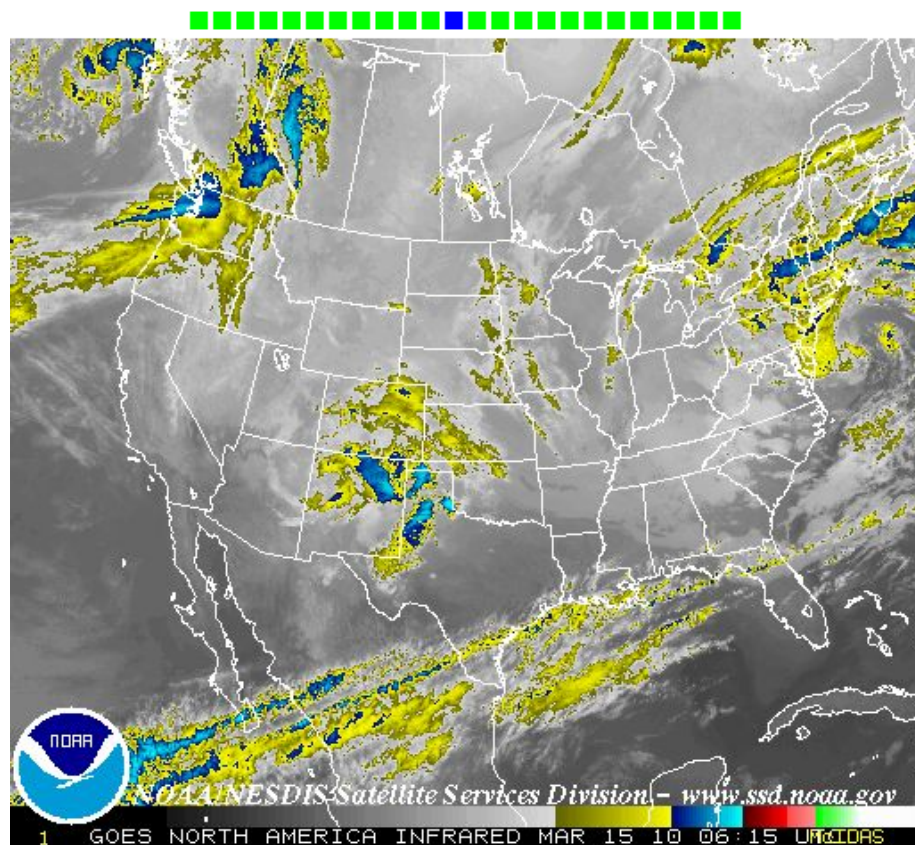
[Home](#) > [Satellite](#) > 24 hour loop

This loop contains the past 24 hours of images of the United States, one image per hour taken from a NOAA satellite. These images are taken in the infrared band of light and show relative warmth of objects. Colder objects are brighter and warmer objects are darker. Lower layers of clouds, generally warmer and lower in altitude, are colored gray. Colder and generally higher clouds tops are highlighted in colors. IR imagery is useful for determining cloud features both at day and night.

[Warnings & Forecasts](#) | 
 [Graphical Forecasts](#) | 
 [National Maps](#) | 
 [Radar](#) | 
 [Rivers](#) | 
 [Air Quality](#) | 
 [Satellite](#) | 
 [Climate](#)

[Infrared](#)      [Visible](#)      [Water Vapor](#)

<   >



[Static](#)   [24 hour Loop](#)   [12 hour Loop](#)   [6 hour Loop](#)   [3 hour Loop](#)

[Alaska](#) | [Hawaii](#) | [Guam](#) | [Puerto Rico](#) | [American Samoa](#) | [Details](#)

US Dept of Commerce  
National Oceanic and Atmospheric Administration  
National Weather Service  
1325 East West Highway  
Silver Spring, MD 20910  
Page Author: NWS Internet Services Team  
Page last Modified: 27 May, 2009 13:19 PM

[Disclaimer](#)  
[Information Quality](#)  
[Credits](#)  
[Glossary](#)

[Privacy Policy](#)  
[Freedom of Information Act \(FOIA\)](#)  
[About Us](#)  
[Career Opportunities](#)